



深圳市凯威尔电子有限公司
SHENZHEN KINGWIRE ELECTRONICS CO., LTD.

NETWORK CABLE
HDMI CABLE

An orange square graphic containing the Chinese characters "网络线" (Network Cable) and "高清线" (High Definition Cable) in white, stacked vertically.

网络线
高清线



公司介绍/COMPANY PROFILE

深圳市凯威电子有限公司，成立于2009年，位于交通便利的深圳龙岗，占地面积10000平方米，我们拥有优秀的团队，专注于产品开发和设计、质量控制和检验以及公司运营。我公司在电缆制造行业拥有丰富的经验，拥有强大的研发团队，提供OEM和ODM服务。我们的主要产品包括跳线、光缆、网线、电话线、模块和配线架等配件产品，并拥有多项自主研发专利，产品符合国际标准，销往全球各国，如出口英国、德国、匈牙利、波兰、美国、澳大利亚、日本、韩国和东南亚。秉承互惠互利的经营原则，我们以专业的服务、优质的产品和有竞争力的价格在客户中享有可靠的声誉此外，我们正在努力开发新产品以满足不同的要求。如果您对产品有任何新的想法或概念，请随时与我们联系。我们热忱欢迎国内外客户与我们建立合作，共创美好未来。

Shenzhen Kingwire Electronics Co., Ltd., established in 2009 and is located in Shenzhen longgang with convenient transportation access. Our company covers an area of 10000 square meters and has many professional employees. we have excellent teams who focus on product development & design, quality control & inspection and company running. Our company has rich experience in the cable manufacturing industry, with a strong in house R & D team, we provide O E M and O D M service. Our main products include patch cord, fiber optical cable, lan cable, telephone cable, module and patch panel and other accessories products. And has multiple independent research and development patents, our products comply with international standard, the product have been sold directly throughout the global country, for example they are exported to U K, Germany, Hungary, Poland, the United States, Australia, Japan, South Korea and Southeast Asia. Adhering to the business principle of mutual benefits, we have had a reliable reputation among our customers because of our professional services, quality products and competitive prices. Besides, we are making great efforts to develop new products to meet different requirements. If you have any new ideas or concepts for the products, please feel free to contact us. We warmly welcome customers from at home and abroad to establish cooperation and create a bright future with us together.

3万条/500箱

日产量

30K PCS/500 Roll

Daily Output

10000m²

生产基地

Production base

多项专利

产品符合国际标准

Multiple patents Products comply with international standards

1

十八年专注网线 箱线的生产研发

Eighteen years of focus on the production and development of network cable and Lan cable

18



2

产品体系完善，多条生产线，让您一站式提货。

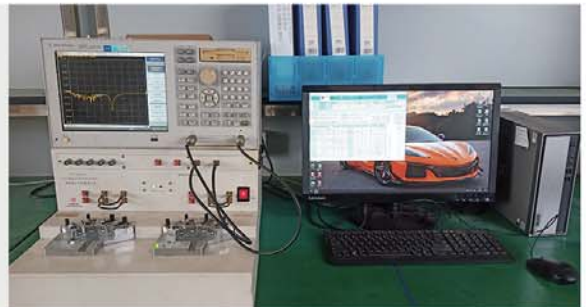
With perfect product system and multiple production lines, allowing you to pick up the goods in one stop.



3

专业工程技术，自主研发适合您的产品

Professional engineering technology, independent research and development of products suitable for you



4

先进的生产测试设备

Advanced production test equipment



5

完善的品质体系，确保批量产品的品质优良

Perfect quality system to ensure the high quality of batch pro batch product

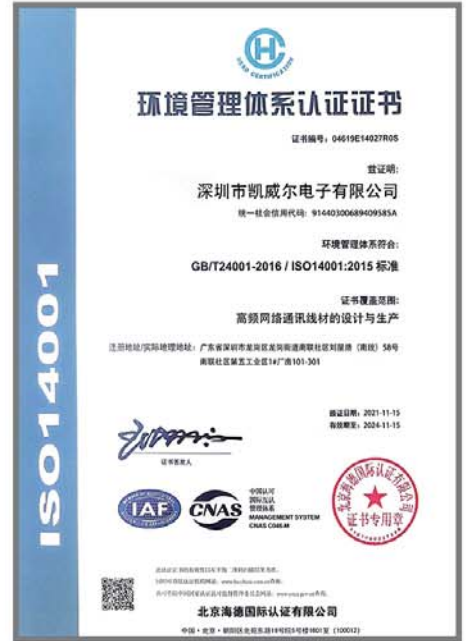




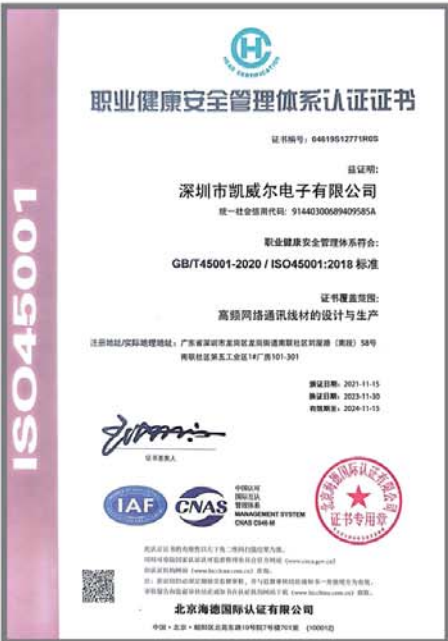
ISO9001
CERTIFICATION



ISO9001
CERTIFICATION



ISO14001
CERTIFICATION



ISO45001
CERTIFICATION



UL
CERTIFICATION



HDMI
CERTIFICATION

网络跳线/NETWORK PATCH CORD CABLE

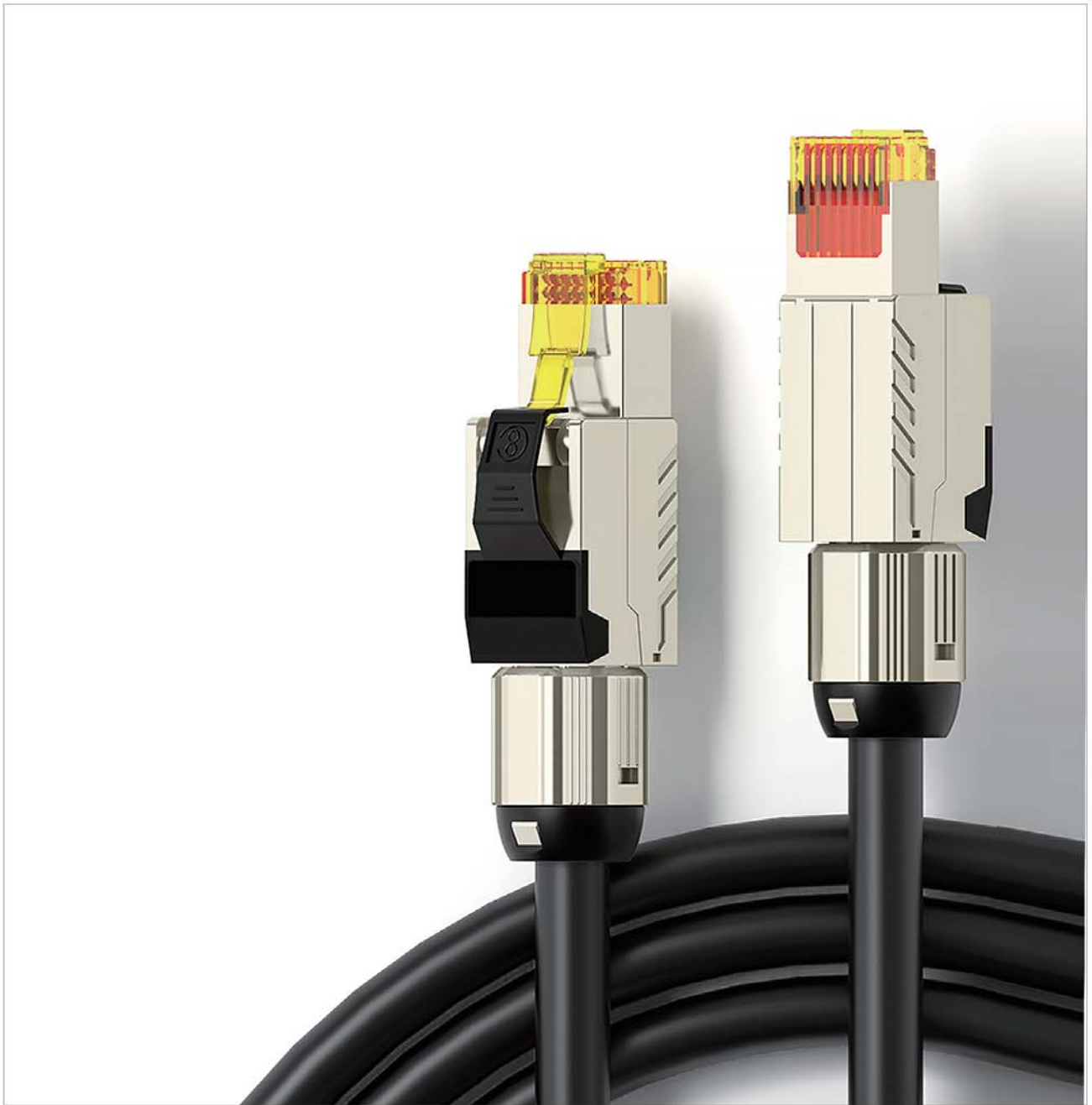
八类网络线/Cat8 Lan Cable	06-07
七类/超六类网络线/Cat7/Cat6a Lan Cable	08-09
六类网络线/Cat6 Lan Cable	10-11
超五类网络线/Cat5e Lan Cable	12-13
扁平网线/Flat Cable	14-15
极细网线/Slim Cable	16
特殊网络跳线/Special network Cable	17
工业网络跳线/Industrial Network Cable	18

工程箱线/NETWORK LAN CABLE

八类网络线/Cat8 Lan Cable	19
七类/超六类网络线/Cat7/Cat6a Lan Cable	20
六类网络线/Cat6 Lan Cable	21
超五类网络线/Cat5e Lan Cable	22

音视频线/AUDIO AND VIDEO CABLE

高清HDMI线/HDMI Cable	23-24
光纤HDMI线/Fiber HDMI Cable	25
视频连接线/Video cable	26
转接头/Adapter	27



八类万兆网络跳线

CAT8 /40-GIGABIT PATCH CABLE

速率(Transmission Speed):40GBASE-T

宽带(Channel Bandwith):2000MHz

外被(Jacket):PVC or LSZH

导体(Conductor):BC

线规 (Wire Gauge) : 22AWG or 23AWG or 24AWG

颜色(Color): 可定制 Customizable

长度(Length): 0.5m/1m/1.5m/2m/3m/5m.....50m



CAT8 SFTP 01



CAT8 SFTP 02



CAT8 SFTP 03



CAT8 SFTP 04

CAT8 SFTP CABLE STRUCTURE

八类双屏蔽网线跳线结构图

**40G速率传输
更快更稳定**

40Gigabit Speed Transmission
Faster And More Stable

支持2000MHZ宽带

Support 2000MHz Channel Bandwith





七类/超6类双屏蔽网络跳线

CAT7/CAT6A SSTP PATCH CABLE

速率(Transmission Speed):10GBASE-TX

宽带(Channel Bandwidth):600MHz

外被(Jacket):PVC or LSZH

导体(Conductor):BC

线规(Wire Gauge):26AWG or 28AWG

颜色(Color):可定制 Customizable

长度(Length):0.5m/1m/1.5m/2m/3m/5m.....50m



CAT7 SSTP FLAT 01



CAT7 SSTP FLAT 02



CAT7 SSTP FLAT 03



CAT7 SSTP FLAT 04



CAT7 SSTP FLAT 05



CAT7 SSTP FLAT 06

CAT7 SSTP CABLE STRUCTURE

七类双屏蔽网线跳线结构图

万兆速率传输
更快更稳定

10Gigabit Speed Transmission
Faster And More Stable

支持600MHZ宽带

Support 600MHz Channel Bandwith





六类千兆网络跳线

CAT6 PATCH CABLE

速率(Transmission Speed):1000BASE-TX

宽带(Channel Bandwith):250MHz

外被(Jacket):PVC or LSZH

导体(Conductor):BC or CCA

线规(Wire Gauge): 24AWG or 26AWG or 28AWG

颜色(Color): 可定制 Customizable

长度(Length): 0.5m/1m/1.5m/2m/3m/5m.....100m



CAT6 UTP 01



CAT6 UTP 02



CAT6 UTP 03



CAT6 UTP 04



CAT6 FTP 05



CAT6 FTP 06

CAT6 UTP CABLE STRUCTURE

六类非屏蔽网线跳线结构图

千兆速率传输
更快更稳定

Gigabit Speed Transmission
Faster And More Stable





超五类网络跳线

CAT5E PATCH CABLE

速率(Transmission Speed):1000BASE-T

宽带(Channel Bandwith):100MHz

外被(Jacket):PVC or LSZH

导体(Conductor):BC or CCA

线规(Wire Gauge): 24AWG or 26AWG or 28AWG

颜色(Color): 可定制 Customizable

长度(Length): 0.5m/1m/1.5m/2m/3m/5m.....100m



CAT5E UTP 01



CAT5E UTP 02



CAT5E UTP 03



CAT5E FTP 04



CAT5E FTP 05



CAT5E FTP 06

CAT5E UTP CABLE STRUCTURE

超五类示意结构图

千兆速率传输
更快更稳定

Gigabit Speed Transmission
Faster And More Stable





扁平网络跳线

FLAT PATCH CABLE

速率(Transmission Speed):1000-40GBASE-T

宽带(Channel Bandwith):250MHz-2000MHz

外被(Jacket):PVC/LSZH

导体(Conductor):BC

线规(Wire Gauge): 26AWG or 28AWG or 30AWG or 32AWG

颜色(Color): 可定制 Customizable

长度(Length): 0.5m/1m/1.5m/2m/3m/5m.....30m



CAT7 SSTP FLAT 01



CAT6 UTP FLAT 02



CAT6 UTP FLAT 03



CAT6 UTP FLAT 04



CAT6 UTP FLAT 05



CAT6 UTP FLAT 06

CAT7 SSTP FLAT CABLE STRUCTURE

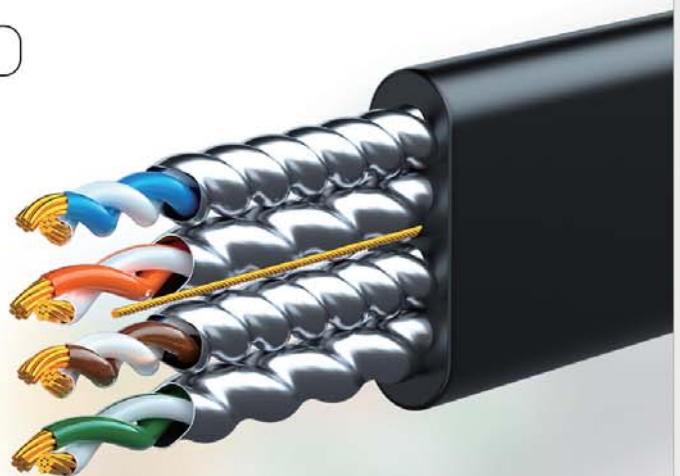
七类双屏蔽扁网结构图

万兆速率传输
更快更稳定

10Gigabit Speed Transmission
Faster And More Stable

支持600MHZ宽带

Support 600MHz Channel Bandwidth





超六类极细网络跳线

CAT6A SLIM PATCH CABLE

速率(Transmission Speed):10GBASE-TX

宽带(Channel Bandwith):500MHz

外被(Jacket):PVC or LSZH or TPU

导体(Conductor):BC

线规(Wire Gauge):28AWG/30AWG/32AWG

颜色(Color):可定制 Customizable

长度(Length):0.5m/1m/1.5m/2m/3m/5m.....20m



UTP DOWN ANGLE 90°CABLE 01



UTP LEFT ANGLE 90°CABLE 02



UTP RIGHT ANGLE 90°CABLE 03



FTP DOWN ANGLE 90°CABLE 04



FTP LEFT ANGLE 90°CABLE 05



FTP RIGHT ANGLE 90°CABLE 06



EXTENTION CABLE 01



EXTENTION CABLE 02

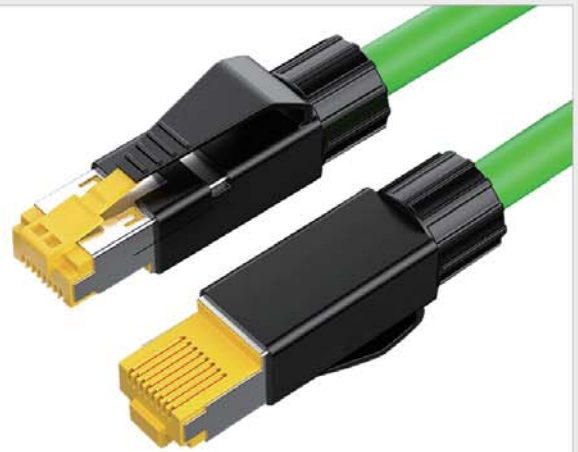


EXTENTION CABLE 03



工业防震伺服4芯高柔网线

INDUSTRIAL ANTI-VIBRATION RJ45 4-CORE CABLE



工业防震伺服8芯高柔网线

INDUSTRIAL ANTI-VIBRATION RJ45 8-CORE CABLE



工业拖链电缆GIGE网线

INDUSTRIAL DRAG CHAIN
CABLE GIGE NETWORK CABLE



M12 4针母头D型转RJ45

M12 4-PIN FEMALE D-TYPE RJ45



M12 8芯母头A型转RJ45

M12 8-PIN FEMALE A TYPE TO RJ45



M12 8针公头A转RJ45

M12 8-PIN MALE A TO RJ45



M12转M12公对公 8芯X型

M12 TO M12 MALE TO MALE 8
CORE X TYPE



M12转M12公对公 8芯A型

M12 TO M12 MALE TO MALE 8
CORE A TYPE



CAT8 SFTP LAN CABLE

八类双屏蔽箱线

材质:无氧铜芯+FMPE+对对包铝箔+地线+编织+PVC外被
 线芯:0.64±0.008mm
 速率:40Gbps/s
 线径:8.8±0.2mm
 带宽:2000MHZ
 长度:50/100/305米

Material: Solid copper core +
 FMPE + pair of wrapped
 aluminum foil + drain wire +
 braiding + PVC jacket
 Wire Core: 0.64±0.008mm
 Rate: 40Gbps/s
 Cable diameter: 8.8±0.2mm
 Bandwidth: 2000MHZ
 Length: 50/100/305M



产品用途/APPLICATION

主要用于大楼通信综合布线系统中工作区通信引出端与交接间的配线架之间的布线，以及住宅综合布线系统的用户通信引出端到配线架之间的布线。

It is mainly used for the wiring between the distribution frame between the working area communication outlet and the handover in the building communication integrated wiring system, and the user communication lead out of the residential integrated wiring system wiring from end to patch panel.





CAT6 UTP LAN CABLE

六类非屏蔽箱线



CAT6 FTP LAN CABLE

六类单屏蔽箱线



CAT6 SFTP LAN CABLE

六类双屏蔽箱线





HDMI线2.0版

HDMI CABLE

插头:镀金接口 Plug: Gold plated connector

分辨率:1-10米支持4K*2K/60HZ 15-30米支持4K*2K/30Hz

Resolution ratio: 1-10m support 4K*2K/60HZ 15-30m support 4K*2K/30HZ

版本:全支持2.0版 Version: Support 2.0 version

线规:1-5米30AWG 8-10米28AWG 15米26AWG 20米24AW

GCable conductor: 1.5m 30awg, 8-10m 28awg, 15m 26awg, 20m 24awg

长度:1/1.5/1.8/2/3/5/8/10/12/15/20/25/30米 Length:1/1.5/1.8/2/3/5/8/10/12/15/20/25/30m

高清HDMI线2.1版

HDMI Cable 2.1 Version

接头(Plug):镀金Gold plated

分辨率 (Resolution ratio) :7680x4320

刷新率 (Refresh rate) :8K/60HZ

线芯材质 (Core material) :铜芯copper

长度 (Length) :1m/1.5m/2m/3m/5m/10m



高清HDMI线2.0版

HDMI Cable 2.0 Version

接头(Plug):镀金Gold plated

分辨率 (Resolution ratio) :3840*2160

刷新率 (Refresh rate) :4K/60HZ

线芯材质 (Core material) :铜芯copper

长度 (Length) :1m/1.5m/2m/3m/5m/10m/15m/20m/25m/30m



DP 1.4版高清线

DP 1.4 CABLE

接头(Plug):镀金Gold plated

分辨率 (Resolution ratio) :7680x4320

刷新率 (Refresh rate) :8K/60HZ

线芯材质 (Core material) :铜芯copper

长度 (Length) :1m/1.5m/2m/3m/5m



光纤HDMI线2.0版

Fiber HDMI Cable 2.0 Version

接头(Plug):镀金Gold plated

分辨率 (Resolution ratio) :3840*2160

刷新率 (Refresh rate) :4K/60HZ

线芯材质 (Core material) :光纤 + 铜芯fiber+copper

长度 (Length) :10/15/20/25/30/40/50/60/80/100/300m



光纤HDMI线2.1版

Fiber HDMI Cable 2.1 Version

接头(Plug):镀金Gold plated

分辨率(Resolution ratio) :7680*4320

刷新率(Refresh rate) :8K/60HZ

线芯材质(Core material) :光纤+铜芯fiber+copper

长度(Length) :10/15/20/25/30/40/50/ 60/80/100m



**FIBER HDMI CABLE
VERSION 2.0 4K**

光纤HDMI2.0版4K



**FIBER DP CABLE
VERSION 1.4 8K**

光纤DP1.4版8K



**DVI SPLIT FIBER
CABLE**

DVI分离式光纤

VGA公对公视频连接线

VGA male to male video connecting cable

接头(Plug) : 镀金Gold plated

分辨率(Resolution ratio) : 1920*1080

外被(Jacket) : 黑色雾面PVC外被black matte pvc jacket

线芯材质(Core material) : 全铜线芯pure copper

长度(Length) : 1-3m



DVI-D公对公连接线

DVI-D male to male video connecting cable

接头(Plug) : 镀金Gold plated

分辨率(Resolution ratio) : 支持1920*1080P/支持3D

外被(Jacket) : 黑色雾面PVC外被black matte pvc jacket

线芯材质(Core material) : 全铜线芯pure copper

长度(Length) : 1-3m



HDMI TO DVI

HDMI转DVI转换线



DP TO HDMI

DP转HDMI连接线



DP TO DVI
DP转DVI公对公转换线



DP TO VGA
DP转VGA公对公转接线



TYPE-C TO HDMI
TYPE-C转HDMI转换线



TYPE-C TO DP
TYPE-C转DP转接线



HDMI TO DVI PLUG
HDMI转DVI转换头



DVI24+1 MALE TO HDMI FEMALE
DVI24+1公转HDMI母



KINGWIRE
凯威尔



深圳市凯威尔电子有限公司
Shenzhen Kingwire Electronics Co.,Ltd.

电话 (Tel) :86-755-88852658 /15818654368

邮箱 (E-mail) :hyman@kingwires.com

地址 (Add) :深圳市龙岗区南联第五工业区西北门一栋

Building 1,No.5 Industrial Zone,Nanlian Community,LonggangStreet,Longgang District,Shenzhen,China.